



www.greatchinaind.com



Great China Industries Ltd. ▲

Contents

Page

| | |
|----------------|----------|
| About Us | 1 |
| Wooden Box | 2 to 23 |
| Watch Winder | 24 to 25 |
| Plastic Box | 26 to 35 |
| Paper Box | 36 to 41 |
| Display & Tray | 42 to 47 |
| Inserts | 48 |



Great China Industrial Ltd is a joint venture between China and Hong Kong, which is an established and reputalde packaging manufacturer. We work in all packaging matters and provide different kind of products, including all kind of jewelry and gift boxes (wooden, plastic, paper and metal). Our company also professional in making display units for use in the retailing of jewelry, watches, spectacles, pens and cosmetics. Principal market are the US, Europe and various places in Asia, including Taiwan, Japan and Singapore.

Our Hong Kong office located in Kwai Chung and the new factory is located in Chang Ping, Dong Guan of Railway station with convenient transporation. Total area is about 6,000 square meters and we have 350 skillful workers in our production line.

Your satisfaction is guaranteed by our manufacturing system and facilities, we would continuously provide best quality services with competitive price and prompt delivery pledges in the future.





Wooden **BOX**



Item #W-04
195(L) x 195(W) x 50(H) mm





Item #W-03

236(L) x 60(W) x 46(H) mm



Item #W-02

91(L) x 91(W) x 65(H) mm



Item #W-01

61(L) x 61(W) x 52(H) mm

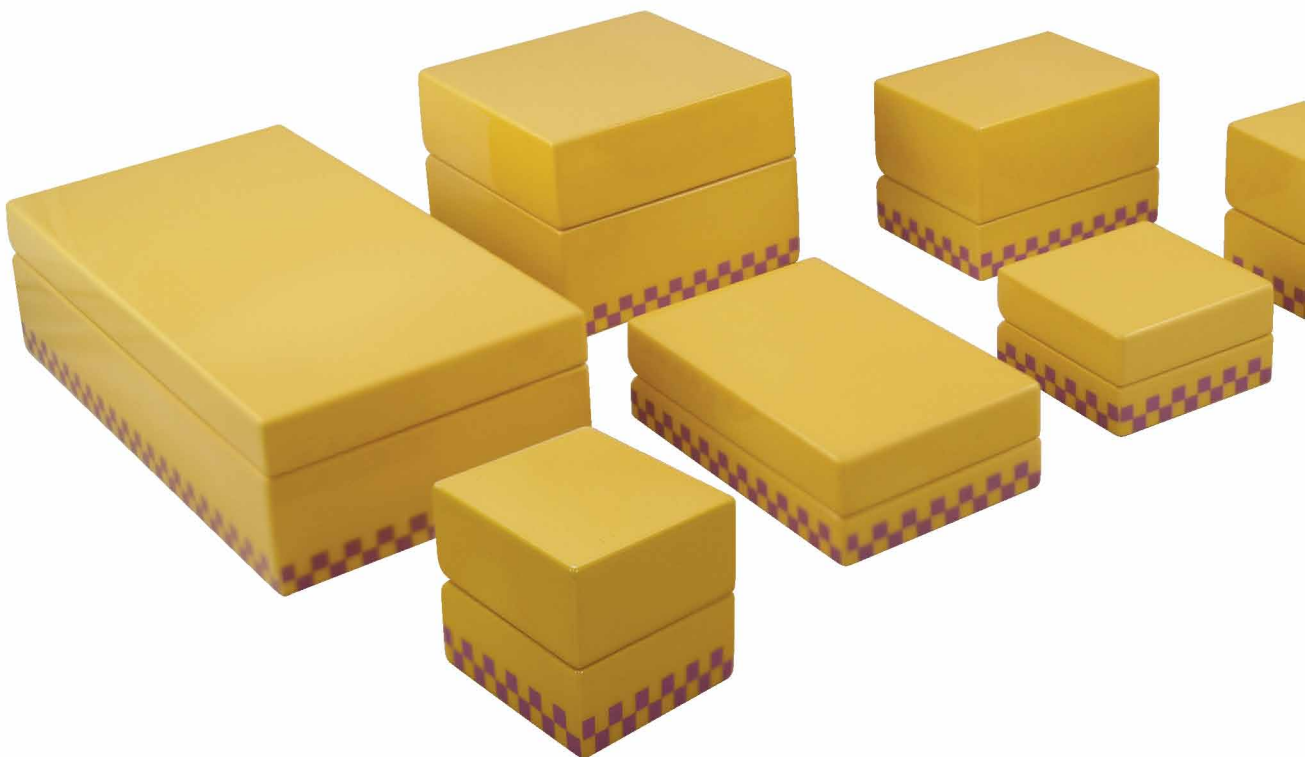
Wooden **BOX**



Item #W-07
81(L) x 61(W) x 60(H) mm



Item #W-05
61(L) x 61(W) x 35(H) mm





Item #W-10
70(L) x 111(W) x 35(H) mm

Item #W-11
101(L) x 201(W) x 56(H) mm



Item #W-06
61(L) x 61(W) x 49(H) mm



Item #W-09
95(L) x 95(W) x 74(H) mm



Item #W-08
91(L) x 91(W) x 72(H) mm

Wooden **BOX**



Item #W-13
61(L) x 61(W) x 49(H) mm



Item #W-14
66(L) x 66(W) x 58(H) mm



Item #W-12
61(L) x 61(W) x 35(H) mm



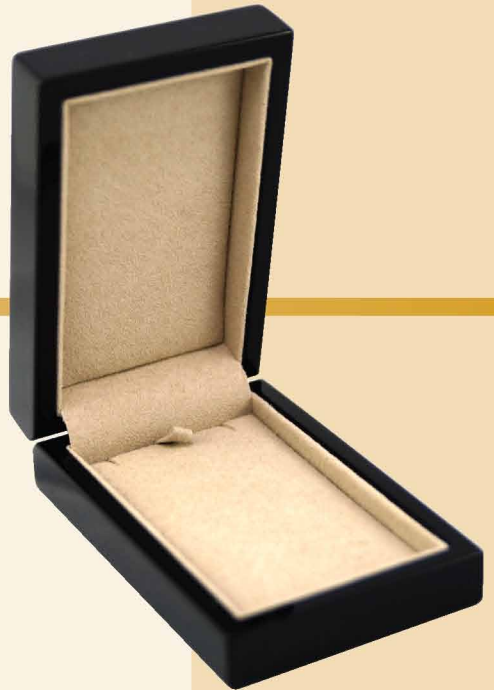
Item #W-16
91(L) x 91(W) x 72(H) mm



Item #W-15
81(L) x 61(W) x 60(H) mm



Item #W-17
70(L) x 111(W) x 35(H) mm



Item #W-18
101(L) x 201(W) x 56(H) mm



Wooden **BOX**



Item #W-19
62(L) x 62(W) x 30(H) mm



Item #W-22
227(L) x 60(W) x 35(H) mm





Item #W-20
62(L) x 62(W) x 55(H) mm

Item #W-21
114(L) x 114(W) x 95(H) mm

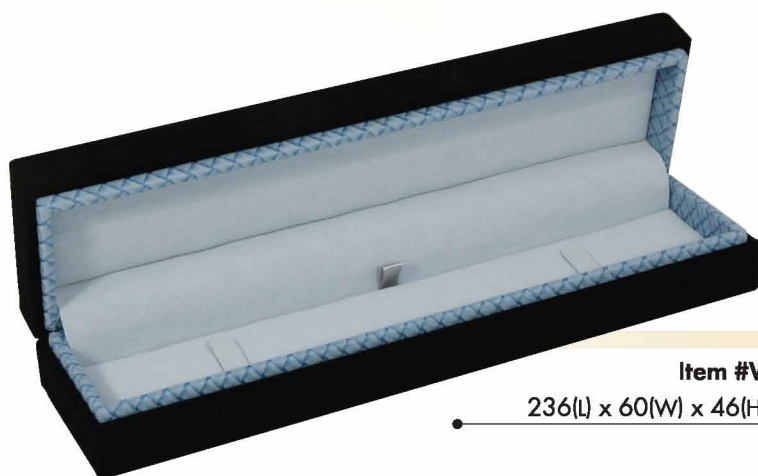


Item #W-23
202(L) x 202(W) x 50(H) mm

Wooden **BOX**



Item #W-25
66(L) x 66(W) x 60(H) mm



Item #W-27
236(L) x 60(W) x 46(H) mm





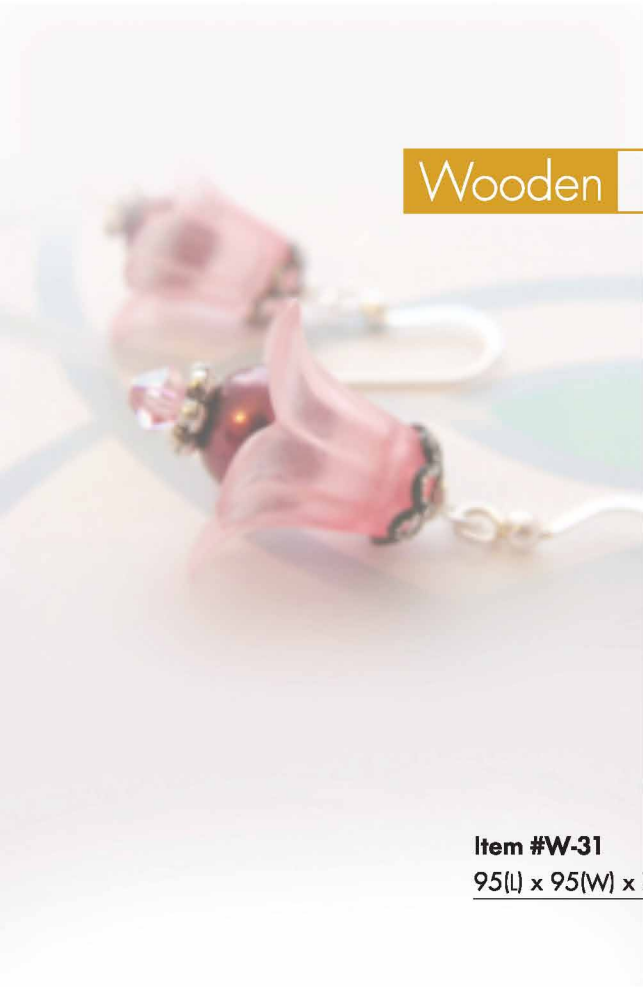
Item #W-24
66(L) x 66(W) x 60(H) mm

Item #W-26
121(L) x 121(W) x 71(H) mm

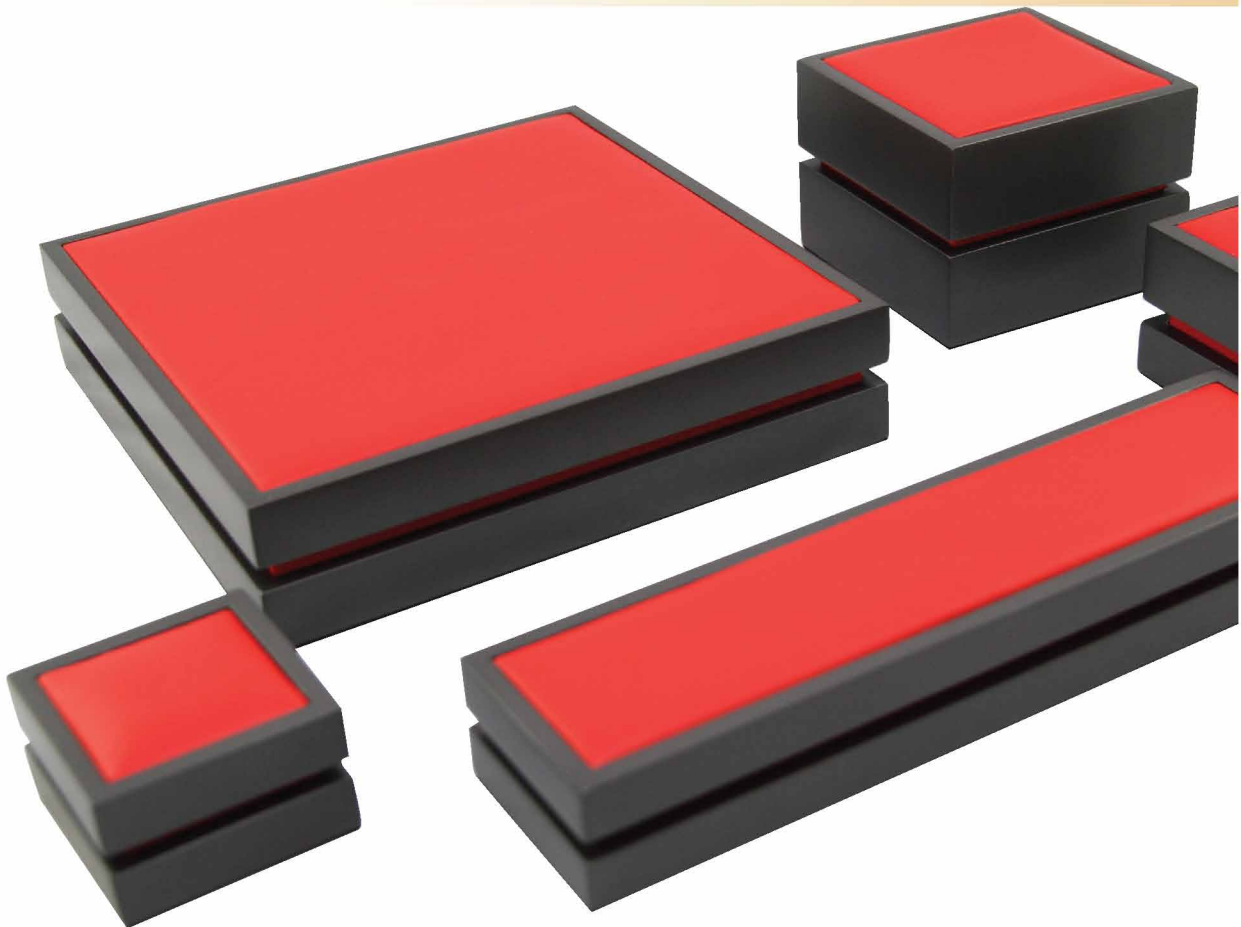


Item #W-28
195(L) x 195(W) x 52(H) mm

Wooden **BOX**



Item #W-31
95(L) x 95(W) x 70(H) mm





Item #W-30
60(L) x 60(W) x 52(H) mm



Item #W-29
59(L) x 59(W) x 37(H) mm



Item #W-32
235(L) x 60(W) x 35(H) mm

Item #W33
195(L) x 195(W) x 46(H) mm





Wooden **BOX**

Item #W-37
170(L) x 197(W) x 40(H) mm





Item #W-35
103(L) x 103(W) x 54(H) mm



Item #W-34
60(L) x 60(W) x 45(H) mm

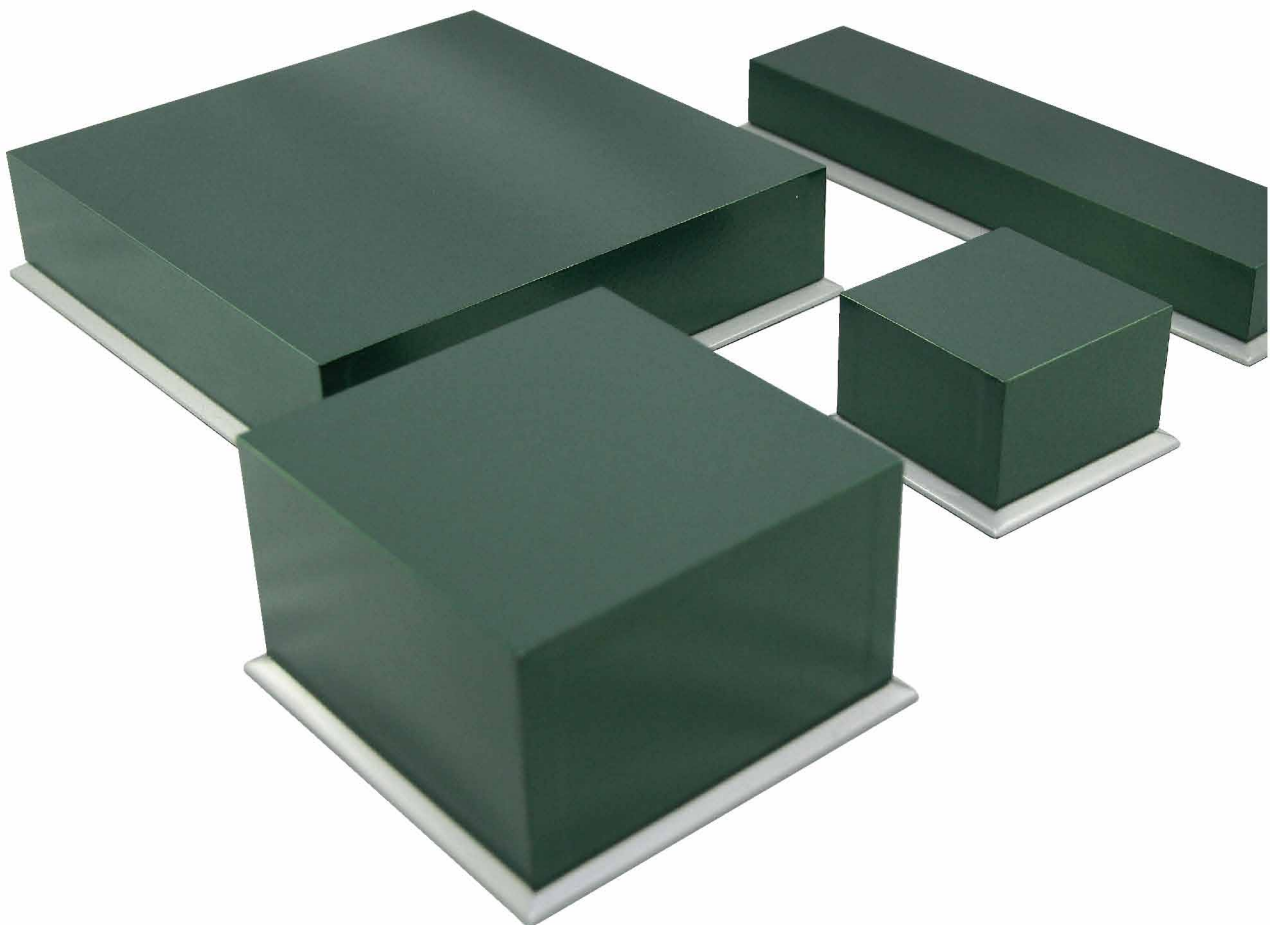
Item #W-36
223(L) x 58(W) x 35(H) mm



Wooden **BOX**



Item #W-39
120(L) x 120(W) x 71(H) mm





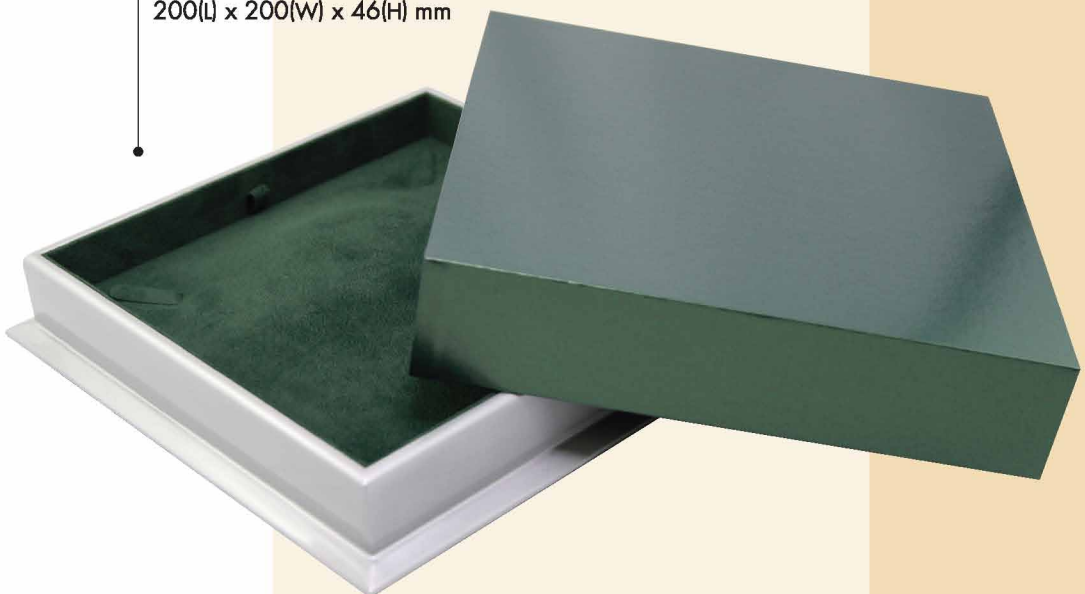
Item #W-40
240(L) x 60(W) x 32(H) mm



Item #W-38
76(L) x 76(W) x 46(H) mm



Item #W-41
200(L) x 200(W) x 46(H) mm



Wooden **BOX**



Item #W-43
65(L) x 65(W) x 55(H) mm



Item #W-45
216(L) x 51(W) x 35(H) mm





Item #W-44
102(L) x 102(W) x 42(H) mm



Item #W-42
65(L) x 65(W) x 55(H) mm



Item #W-46
191(L) x 203(W) x 45(H) mm

Wooden **BOX**



Item #W-47

242(L) x 150(W) x 138(H) mm



Item #W-48

200(L) x 170(W) x 110(H) mm

Wooden **BOX**



Item #W-49
293(L) x 92(W) x 85(H) mm



Item #W-50
293(L) x 92(W) x 85(H) mm





Item #W-51

279(L) x 190(W) x 106(H) mm

Watch Winder



Item #WW-01
190(L) x 235(W) x 230(H) mm



Item #WW-02

335(L) x 255(W) x 190(H) mm

Plastic

BOX



Item #PS-01

63(L) x 63(W) x 43(H) mm



Item #PS-02

65(L) x 57(W) x 43(H) mm





Item #PS-05

185(L) x 131(W) x 43(H) mm



Item #PS-04

230(L) x 58(W) x 32(H) mm



Item #PS-03

75(L) x 100(W) x 35(H) mm

Plastic

BOX

Item #PS-07

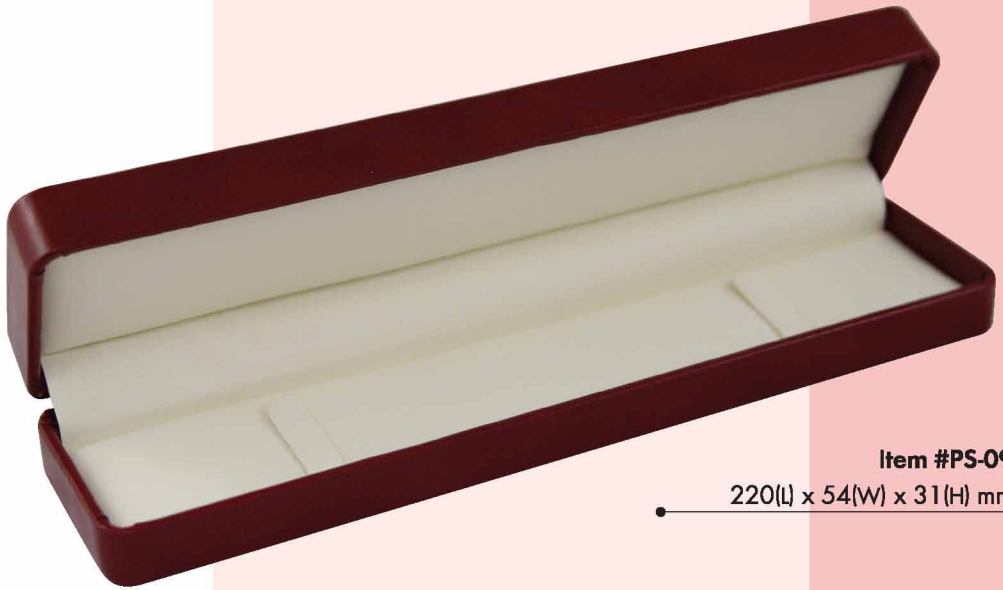
70(L) x 70(W) x 40(H) mm



Item #PS-08

90(L) x 90(W) x 40(H) mm





Item #PS-09
220(L) x 54(W) x 31(H) mm



Item #PS-06
51(L) x 60(W) x 48(H) mm



Item #PS-10
189(L) x 189(W) x 38(H) mm

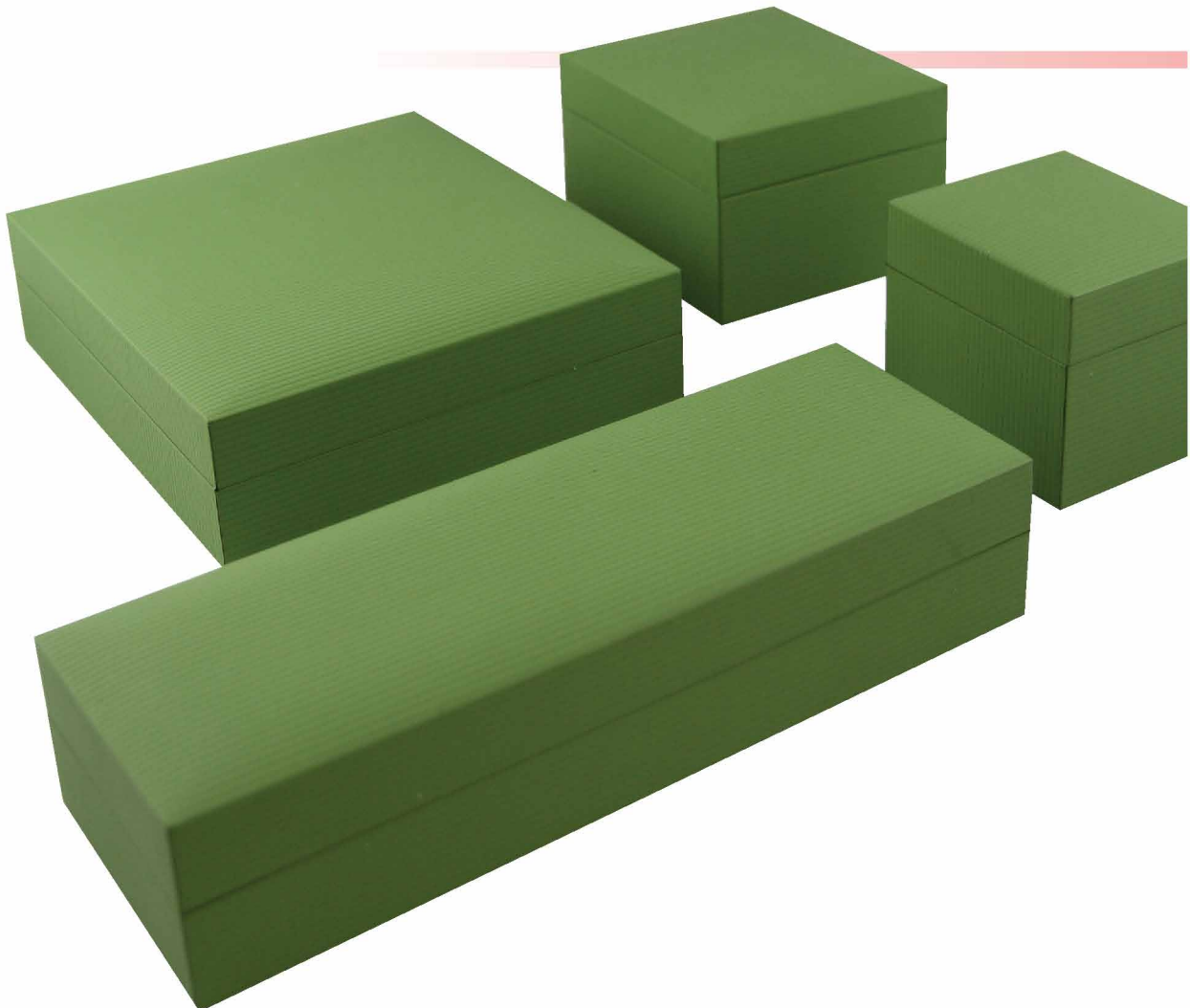
Plastic

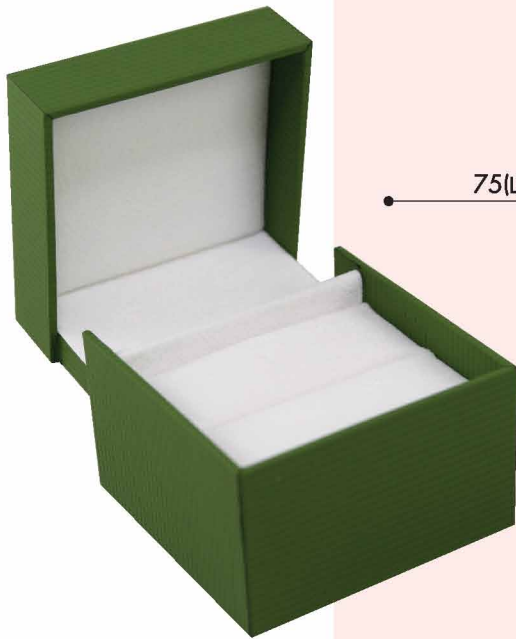
BOX



Item #PS-13

240(L) x 75(W) x 47(H) mm





Item #PS-11
75(L) x 75(W) x 67(H) mm



Item #PS-12
100(L) x 100(W) x 67(H) mm

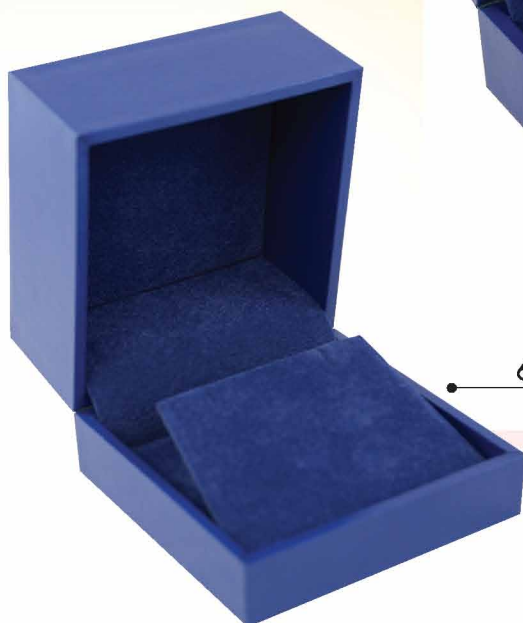


Item #PS-14
160(L) x 160(W) x 47(H) mm

Plastic **BOX**

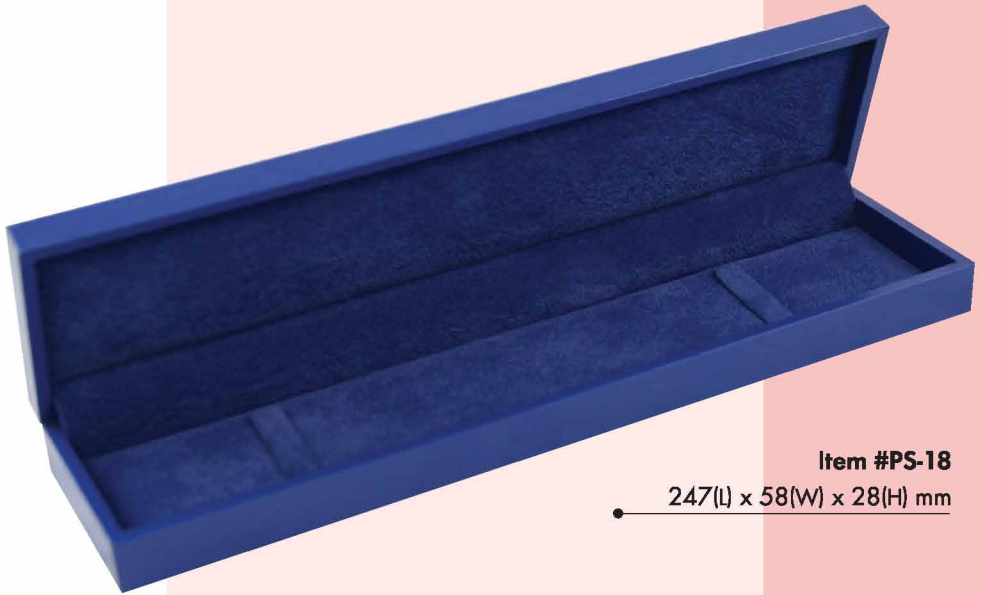


Item #PS-17
94(L) x 94(W) x 65(H) mm



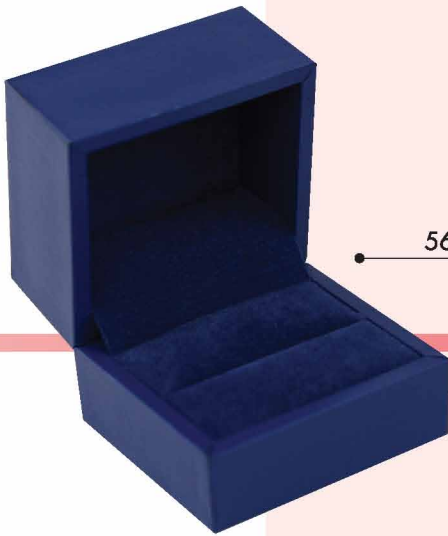
Item #PS-16
64(L) x 70(W) x 47(H) mm





Item #PS-18

247(L) x 58(W) x 28(H) mm



Item #PS-15

56(L) x 51(W) x 46(H) mm



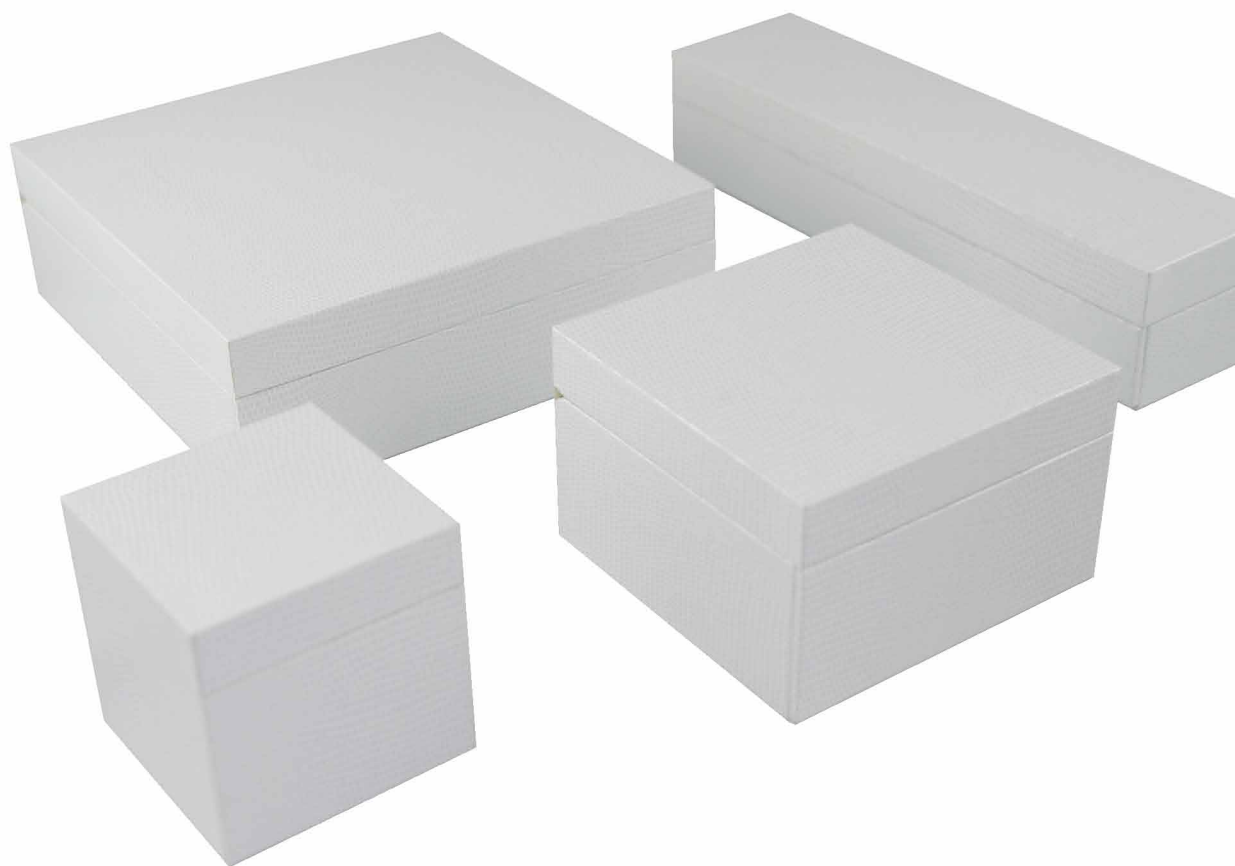
Item #PS-19

190(L) x 240(W) x 40(H) mm

Plastic **BOX**



Item #PS-20
65(L) x 65(W) x 65(H) mm





Item #PS-21
220(L) x 55(W) x 46(H) mm



Item #PS-22
100(L) x 100(W) x 63(H) mm



Item #PS-23
161(L) x 161(W) x 53(H) mm



Paper **BOX**



Item #PB-04
235(L) x 63(W) x 40(H) mm





Item #PB-02

66(L) x 66(W) x 51(H) mm



Item #PB-03

94(L) x 94(W) x 84(H) mm



Item #PB-01

66(L) x 66(W) x 51(H) mm



Item #PB-05

164(L) x 164(W) x 45(H) mm

Paper

BOX



Item #PB-08

100(L) x 100(W) x 50(H) mm



Item #PB-09

220(L) x 63(W) x 42(H) mm





Item #PB-10

200(L) x 200(W) x 48(H) mm



Item #PB-06

60(L) x 70(W) x 60(H) mm



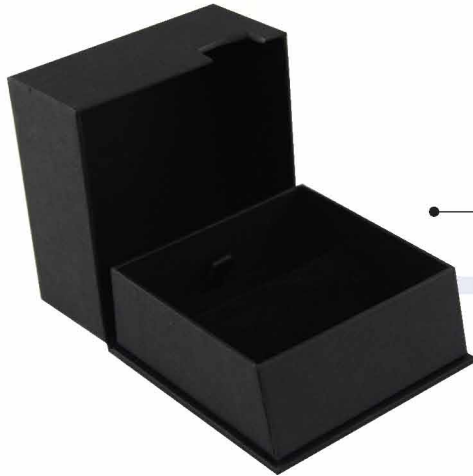
Item #PB-07

80(L) x 80(W) x 51(H) mm

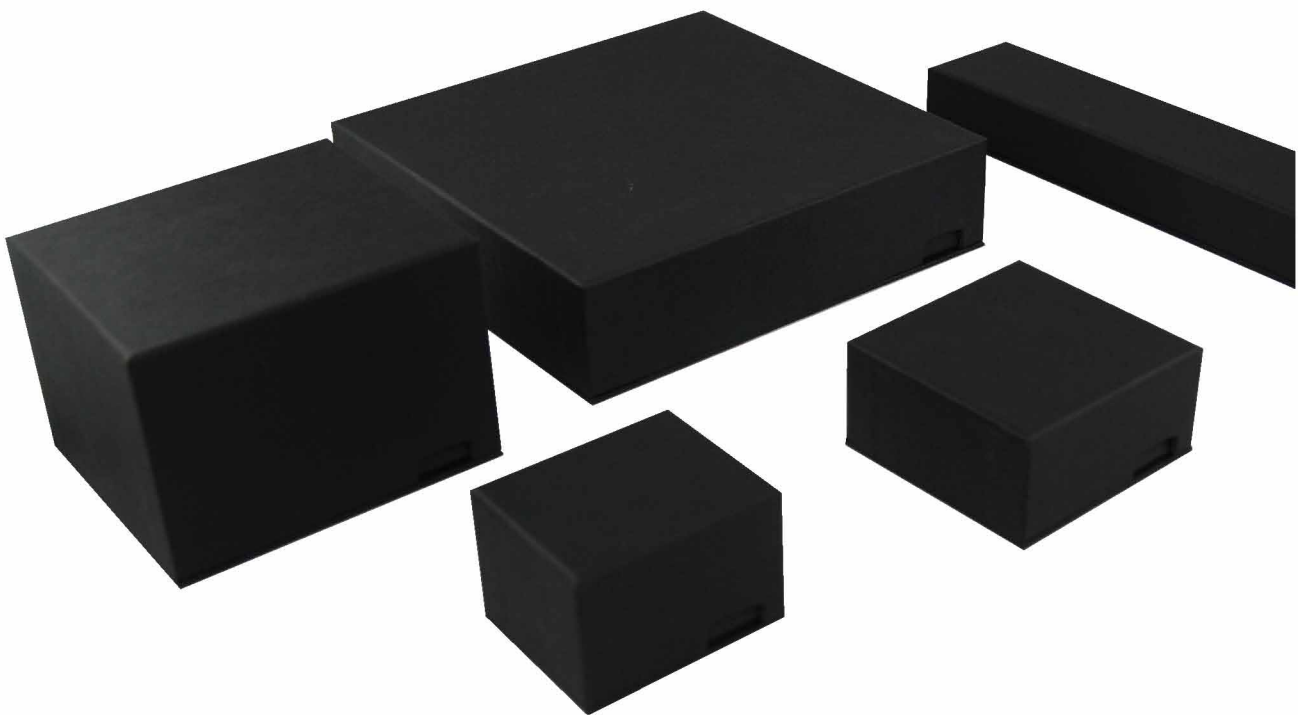
Paper **BOX**



Item #PB-13
60(L) x 50(W) x 40(H) mm



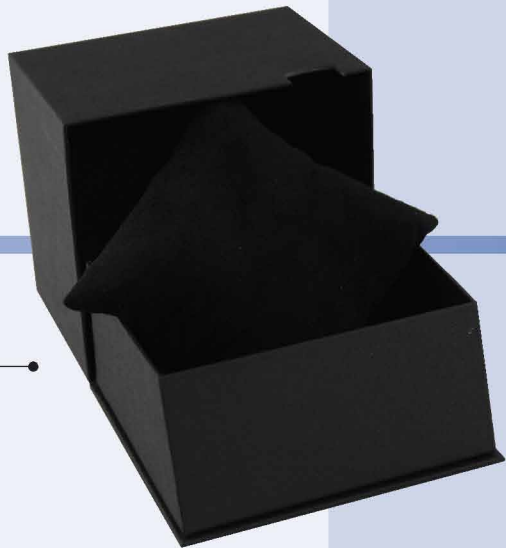
Item #PB-14
70(L) x 70(W) x 35(H) mm





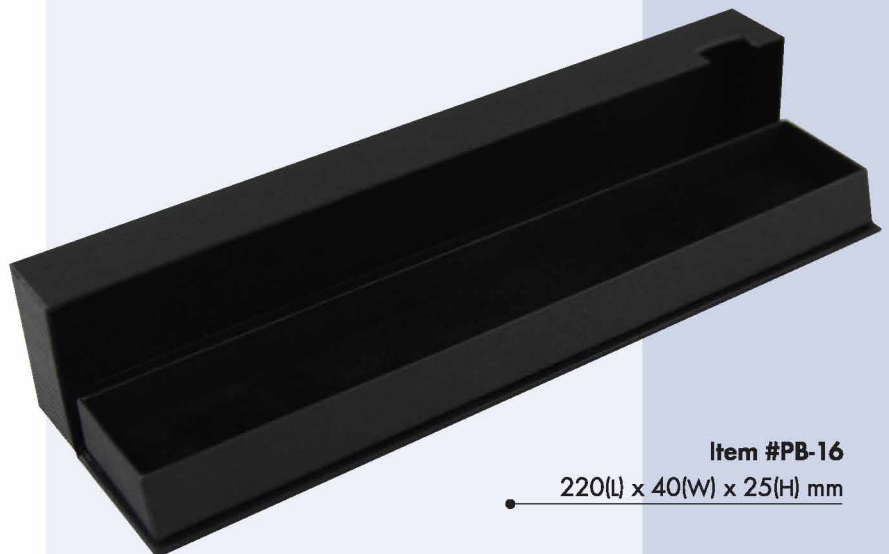
Item #PB-17

160(L) x 160(W) x 40(H) mm



Item #PB-15

100(L) x 90(W) x 70(H) mm



Item #PB-16

220(L) x 40(W) x 25(H) mm

Display & TRAY



Item #D-02

98(L) x 62(W) x 52(H) mm



Item #D-08
101(L) x 101(W) x 154(H) mm

Item #D-07
101(L) x 101(W) x 129(H) mm

Item #D-06
101(L) x 101(W) x 101(H) mm



Item #D-05
101(L) x 101(W) x 78(H) mm

Item #D-04
101(L) x 101(W) x 57(H) mm



Item #D-01
53(L) x 57(W) x 61(H) mm



Item #D-03
90(L) x 56(W) x 102(H) mm



Display & TRAY



Item #D-10
45(L) x 45(W) x 90(H) mm

Item #D-09
52(L) x 52(W) x 80(H) mm



Item #D-13
180(L) x 180(W) x 115(H) mm



Item #D-14
195(L) x 100(W) x 250(H) mm

Item #D-11
33(L) x 134(W) x 68(H) mm



Item #D-12
90(L) x 105(W) x 50(H) mm

Display & **TRAY**



Item #D-22
395(L) x 295(W)mm





Item #D-17

Item #D-20



Item #D-21



Item #D-19



Item #D-18

#D-17 : 41(L) x 41(W) x 105(H) mm

#D-18 : 41(L) x 41(W) x 116(H) mm

#D-19 : 41(L) x 41(W) x 124(H) mm

#D-20 : 41(L) x 41(W) x 135(H) mm

#D-21 : 41(L) x 41(W) x 146(H) mm



Item #D-16

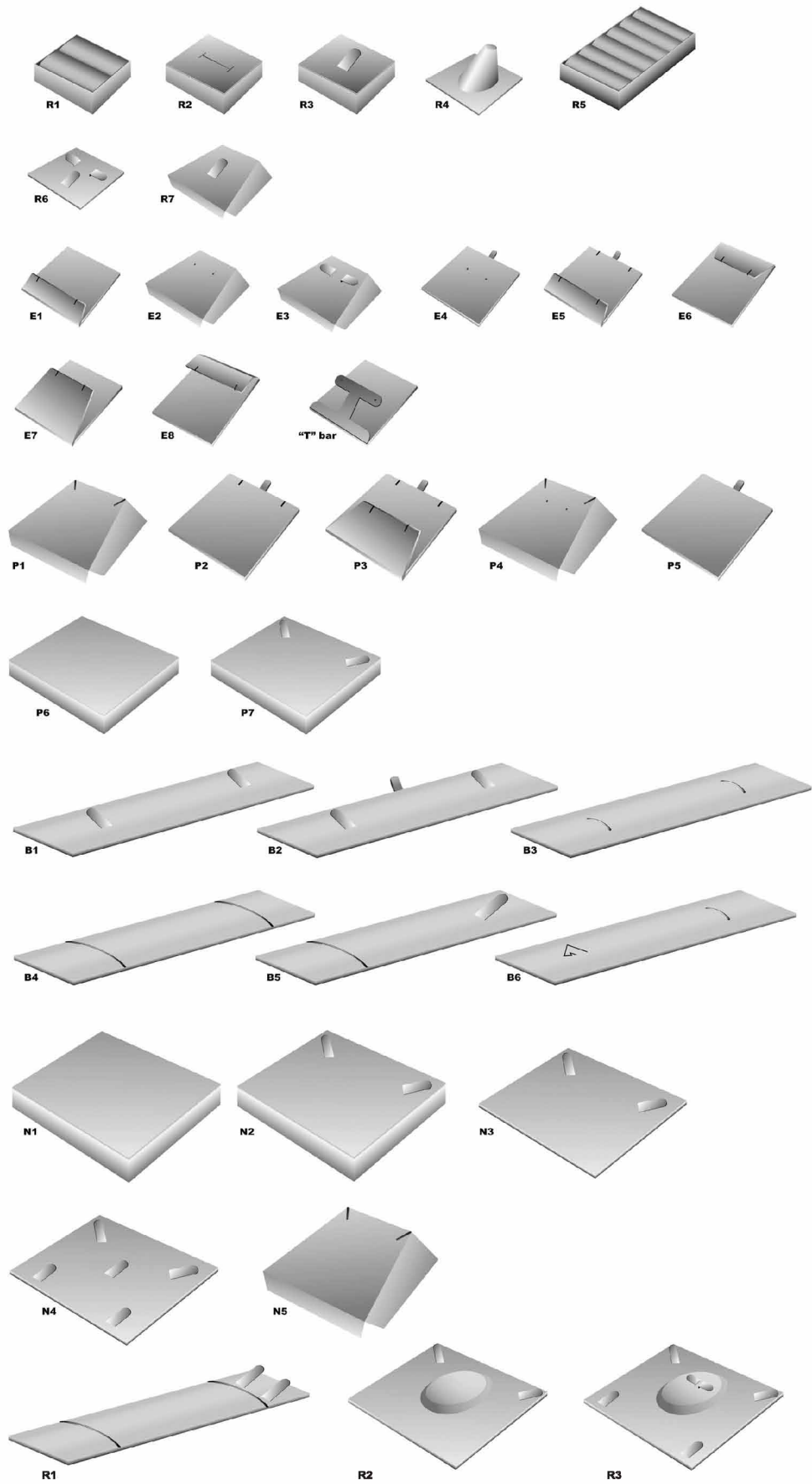
195(L) x 170(W) x 235(H)mm



Item #D-15

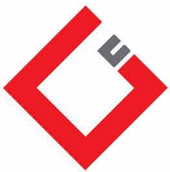
190(L) x 190(W) x 215(H)mm

INSERTS



www.greatchinaind.com





Hong Kong Office 香港辦公室：

Great China Industries Ltd. 毅華實業有限公司

Flat C, 19/F., Boldwin Industrial Bldg., 16-18 Wah Sing Street, Kwai Chung, N.T. Hong Kong.

香港新界葵涌華星街16-18號保盈工業大廈19樓C室

Tel: (852) 2615 9188 Fax: (852) 2858 7706 E-mail: patrick@greatchinaind.com

Web-site: www.greatchinaind.com

China Factory 國內廠址：

Zhan Yuan Packaging Factory 展源包裝廠

Qiaozi, Changping, Dongguan City, Guangdong, China.

東莞市常平鎮橋梓村委會城工業區

Tel: (86) 769-8108 6619, (86) 769-8108 6620 Fax: (86) 769-8108 6621

